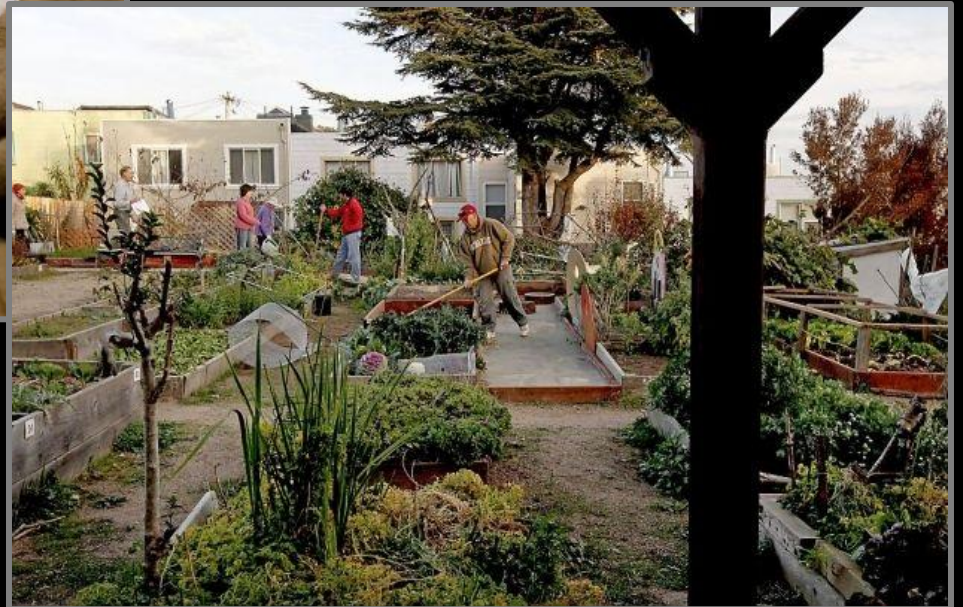


# Brotherhood Way Community Garden

*Welcome*

---



# Brotherhood Way Community Garden

## *Agenda*

---

- |                    |  |
|--------------------|--|
| <b>6:30 – 7:00</b> | <b>Participants arrive / sign-in</b>   |
| <b>7:00 – 7:15</b> | <b>Brief opening statements and welcome from Supervisor.<br/>/ Introduce SFDPW, Rec Park, and Parks Alliance</b> |
| <b>7:15 – 7:45</b> | <b>Provide overview of the site and history of project</b>   |
| <b>7:45 – 8:00</b> | <b>SF Recreation and Park Department overview on types<br/>of Community Gardens within SF</b>                    |
| <b>8:00 – 8:15</b> | <b>Urban Permaculture Institute presentation of designs<br/>for site</b>   |
| <b>8:15 – 8:30</b> | <b>Next steps for the project</b>  |
| <b>8:30 – 9:00</b> | <b>Workshop activity</b>   |

# Brotherhood Way Community Garden

## *Meeting Goals*

---

- Introduce participants to different community garden form**
- Gauge community interest and capacity to support the development of the garden**
- Identify key community members to serve as champions for the project**

# Brotherhood Way Community Garden

## *Introductions*

---



### **SF Board of Supervisors – Supervisor Avalos**

- Pledged support for the Brotherhood Way project
- Provided resources to fund the planning stages of the project
- Committed to increasing green space within the District



### **SF Recreation and Park Department**

- Manages Community Gardens across the City
- Hosts the City's Urban Agriculture Program



### **SF Department of Public Works**

- Brotherhood Way project is within DPW land
- Hosts the Street Parks program which converts DPW land into community stewarded green space



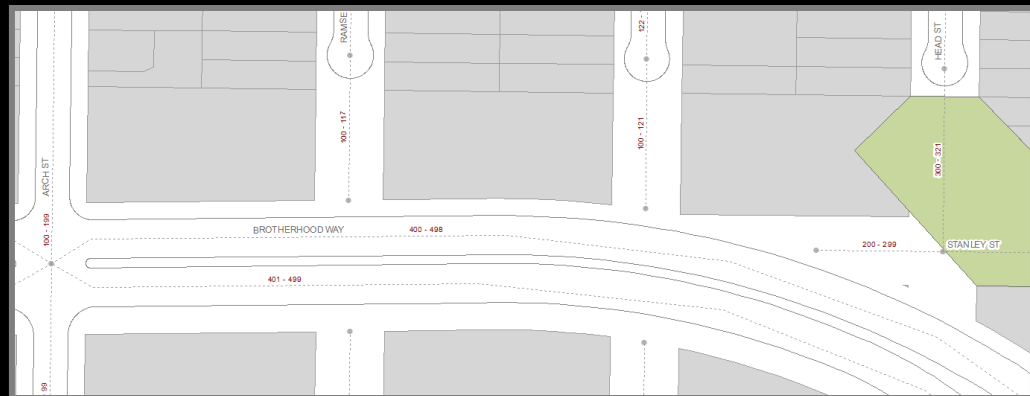
### **SF Parks Alliance**

- Non-profit agency partner with the Street Parks program
- Assists in the development of green space and park projects throughout the City

# Brotherhood Way Community Garden

## *Site background*

- Project area measures 100 x 722 ft
- Consists of three lots and two unimproved right-of-ways
- DPW jurisdiction
- 1.6 acres



# Brotherhood Way Community Garden

## *Site background*

---

**July 2013** – Peter Vaernet contacts DPW about a potential Community Garden project along the Brotherhood Way corridor.

**September 2013** – Site visit with SFPD, SF Park Alliance to determine if site is appropriate for the Street Parks Program.

**October 2013** – Peter begins engaging neighbors on potential designs

**November 2013** – Due to the scope of the project and lack of funding, it is decided a larger planning effort with increased neighborhood engagement is required for the projects success.

**January 2014** – Neighborhood meeting with Supervisor Avalos to discuss the project. The Chronicle writes article about project.

**May 2014** – Internal meeting to discuss project development with the Supervisor's office, SF Recreation and Park Department, SF Public Works, and SF Parks Alliance



# Brotherhood Way Community Garden

## *Types of Community Gardens*

---



Little Red Hen  
Garden

# Brotherhood Way Community Garden

## *Types of Community Gardens*

---



Alemany Farm



# Brotherhood Way Community Garden

## *Types of Community Gardens*

---



Koshland Community  
Garden





# Brotherhood Way Community Garden

## *Types of Community Gardens*

---

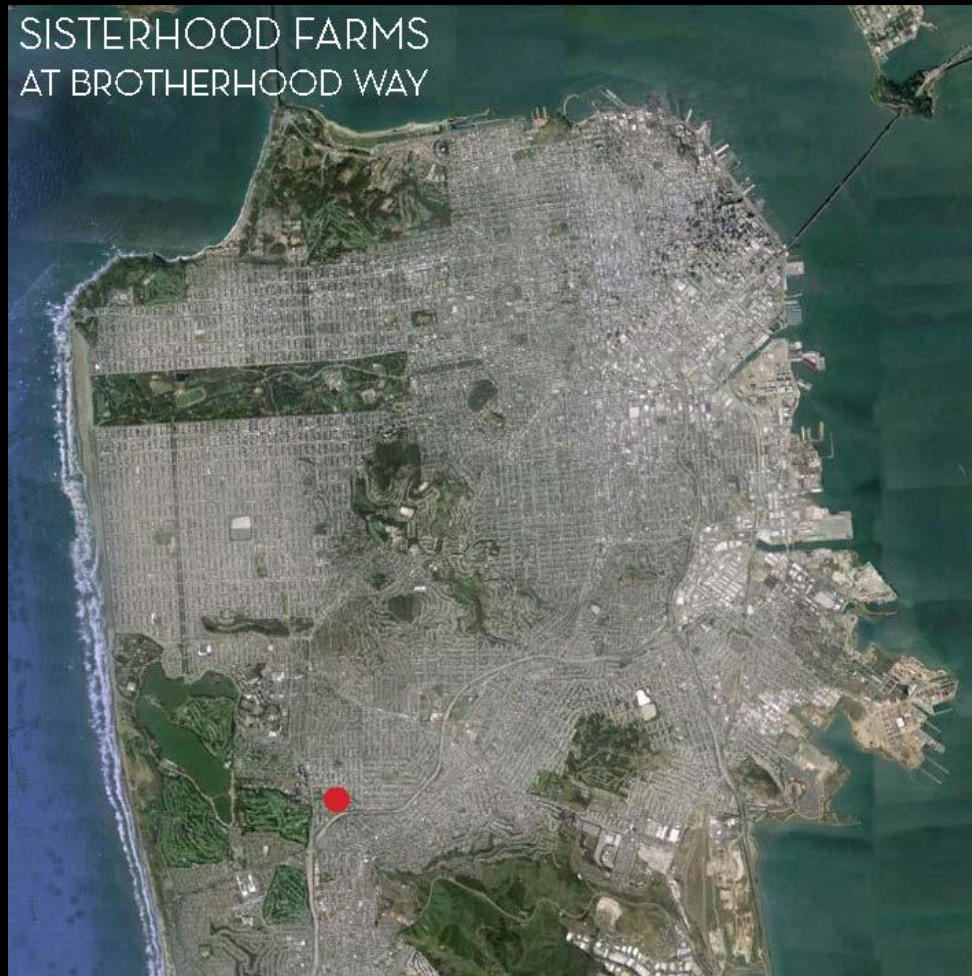


18<sup>th</sup> Street &  
Rhode Island Street

# Brotherhood Way Community Garden

## *Urban Permaculture Institute – Design Presentation*

---



# Brotherhood Way Community Garden

## *Next steps for the project – Potential timeline*

---

### Fall / Winter 2014

- Community garden design process
- Organize neighborhood gardening committee / volunteers
- Create work plan / phase project / budget

### Spring / Summer 2015

- Conduct consistent volunteer cleanups and workdays at site
- Seek additional funding for project

### Fall / Winter 2015

- Apply for Community Challenge Grants
- Groundbreaking for initial phases

### Spring / Summer 2016

- Continue volunteer cleanups and workdays
- Create community garden governance plan



# Brotherhood Way Community Garden

*Next steps for the project – Project needs*

---



# Brotherhood Way Community Garden

## *Expectations for Community Champions*

---

### Community Champions are expected to...

- *Act as a liaison between the City and members of the community.*
- *Organize neighborhood meetings and help coordinate volunteer workdays at the site.*
- *Carry the vision for the project and grow local support as the project develops.*
- *Willingness to dedicate 8-16 hours a month to the project.*
- *Be invested enough to stick with the project that could take over 2 years to complete.*

# Brotherhood Way Community Garden

## *Community Garden Feedback Activity*

---

**\*\*\* Breakout Session \*\*\***